



PHAROS 140360

For product specifications, materials and colours, please refer to the details inside

Technical data

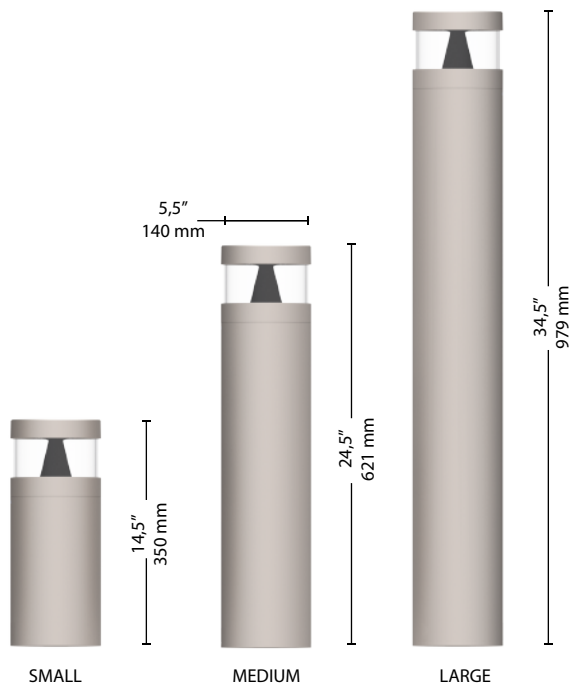
rev. 2021.02

ACCESSIBILITY



Compact

Sealed fixture with short power cable and IP electrical connector for a quick and simple linkage to the mains.



Scale: 1:12

Max. weight

Small 7,7 lb (3,5 Kg)

Medium 11 lb (4,5 Kg)

Large 15,4 lb (7 Kg)

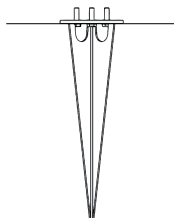
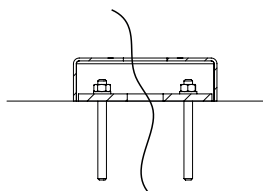
FIXING TYPE



Flange



Earth pike



STANDARD

Compliance: UL Standard 1598-CSA C22,2no.250.0.

CONFORMITY | PROTECTION

Conformity



Salt spray test

ISO 9227



8000 hr

Safety classes



Class I

Protection classes



Photobiological safety



Classe 0 Rischio esente IEC/TR62471

PLUS



CUT OFF



OPTICAL FLEXIBILITY



LOW GLARE



COMPLIANT

LIGHTING FIXTURE FEATURES

General features

Power source: 120-277V | 50/60Hz | tolerance +/-10%

Current supply: 350 mA | 525 mA | 700 mA (P_{max} = 11W)

Power Factor | THD: ≥0.95 | <10 % (At full load)

Expected life (Ta=77°F|25°C): > 100.000 h | L90B10 | @ LED 700mA

Operational temperature (Ta): T_{min} = -40°F (-40°C) T_{max} = 131°F (55°C)

Storage temperature: -40°F/+176°F (-40°C/+80°C)

Standard functions: Current fixed

Materials

Lighting fixture: Die cast aluminium | EN1706

Optical system: Optics in PMMA
Direct low glare reflector

Structure: Extruded aluminium | EN573-3

Screen: Glass | PMMA

Gaskets: Removable silicon

Cable gland: Polyamide PA66 | PG16 | Ø 0,55in (14mm) MAX

Screws and bolts: AISI 304 stainless steel

Fixture color: GMR light

Flange: Powder coated hot galvanized S235 steel

LED FEATURES

LED data 4.000 K - 700mA: 340 lm/LED | 180 lm/W | 77°F (25°C) [Tj] | ≤ 3 step MacAdam

Color temperature: 3.000 K | 4.000 K | 5.700 K | CRI ≥ 70

OPTIONAL

Additional surge protector device: SPD | Max peak current 10kV/kA 8/20µs

Mechanical equipment: Fixing by means of an AISI 304 stainless steel stake

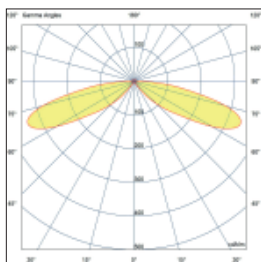
Optional functions: DALI-DALI2

Pharos 140 360

Available optical system



**WALKWAYS\\
OPTIC 6
6A-360**



Roto-symmetrical optics,
designed to suite
pedestrian areas, parks,
public and private
gardens.

APPLICATION EXAMPLES\\



6A-360

Photometric data

rev. 2021.02

The LED modules nominal data refers only to the LED light sources in a standard version, with 4000 K color temperature, color rendering index CRI 70 min. and a junction temperature t_j of 77°F (25°C). The LED nominal data are extrapolated from the manufacturer documentations.

The lighting fixture measured data refers to GMR ENLIGHTS products in a standard version, with 4000 K color temperature, optica type 6A and an ambient temperature t_a of 77°F (25°C).

GMR ENLIGHTS offers the possibility of driving the device with custom currents (•).

To obtain luminous fluxes and efficiencies of the lighting fixture in case of color temperature and/or color rendering index different from the standard use the conversion factors shown in the tables.

LED modules nominal data (4000 K | CRI 70 min. | $t_j=77^\circ\text{F}$ | 25°C)

LED code		I [mA]	Luminous flux [lm]	LED power [W]	Efficiency [lm/W]
GL01		350	752	4	188
		525	1084	6	181
		700	1562	9	174

Lighting fixture measured data (4000 K | OPTIC 6A | $t_a=77^\circ\text{F}$ | 25°C)

Order code:	(•)				
PHB140S_360__GLxx	I [mA]	Luminous flux [lm]	LED power [W]	Efficiency [lm/W]	
GL01		350	242	6,0	40
		525	343	9,0	38
		700 (max)	434	10,0	43

Tk CONVERSION FACTOR LUMINOUS FLUX

Tk [K]	Flux multiplier
3.000	0,94
5.700	1,01

CRI CONVERSION FACTOR LUMINOUS FLUX

CRI (color render index)	Flux multiplier
70	1,00
80	0,93

Standard functionality

Fixed current

During production, the light fixture is pre-set with a fixed current amongst the standard settings that appear in the tables on page 3. Upon customer's request, it is also possible to set a specific current (custom setting).

Virtual Midnight | Automatic dimming

The driver is programmed to automatically dim the light output according to the time. As required by regulations, the maximum output is set during initial hours and towards the end of the light fixture's operating time interval. During these hours there is statistically more traffic. The light output is then dimmed during the central hours of the operating time interval. This management is achievable through a self-learning process of the device, that establishes the centre point of the time interval. This moment is called "virtual midnight" and it is the point that the dimming profile refers to in order to know when to reduce the light output. We can manage up to 8hrs of programming that evolve around the virtual midnight and up to 5 steps of dimming. This way the light output will adjust automatically, adapting throughout the year to the duration of the nighttime, by referring to the pre-set parameters based on the centre point of the operating time interval.

CLO Constant Lumen Output

LEDs over time are inevitably subject to performance depreciation. This light reduction may be compensated by gradually increasing the LED's current during its lifespan, this corresponds to a gradual increase of lumen output proportional to the amount that is naturally depreciated.

1-10V Analog control system

On request, the fixture can be equipped with 1-10V dimming interface. This protocol provides the possibility of dimming a single device or a public lighting line through a 1-10V control bus.

On request functionality

DALI - DALI2 Control and monitoring system

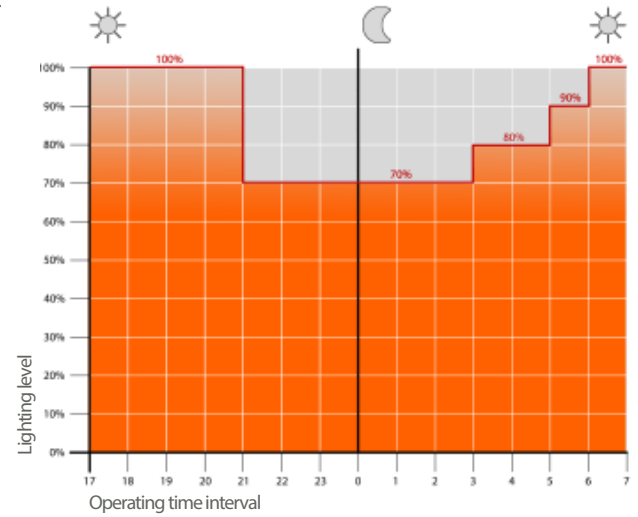
On request, the fixture can be fitted with a DALI2 communication interface. This protocol allows it to be monitored and controlled remotely through use of Dali control buses.

LINESWITCH

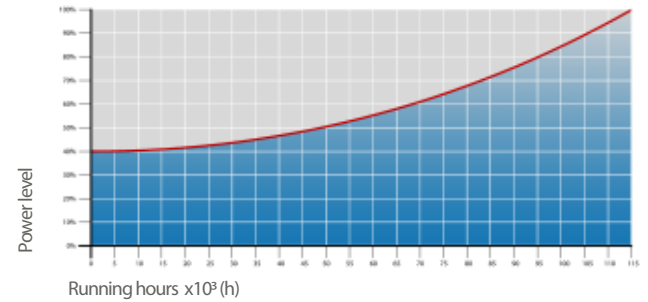
This functionality by using an extra wire within the streetlight's power line, allows to dimmer to a pre-set level. For example, a centralised timer can change this value from 100% to 50%, and vice versa.

AMPDIM

This feature allows dimming using the power line controlled by an upstream flow regulator. For this feature, the flow controller must use amplitude modulation (AM).



Example of 4-step adjustment with virtual midnight



CLO Light Flow Compensation

Protection cycles

GMR ENLIGHTS works with cast iron, steel and aluminum. The materials are selected and processed to maximize performance and quality.

GALVANIZED STEEL

Protection of galvanized steel surfaces for poles

The protection of galvanized steel elements is achieved by following steps:

- Micro sandblasting;
- First epoxy layer application followed by: Wilting > Drying > Cooling;
- Acrylic glaze layer application followed by: Wilting > Drying > Cooling;
- Packing at least after 24-hour-drying at room temperature.

Protection of galvanized steel surfaces for brackets and pastorals

The protection of the galvanized steel elements is achieved thanks to:

- Micro sandblasting;
- Phosphoric pickling bath at a ph level ranging from 1.5 to 3;
- Rinsing with demineralised water;
- First powder layer application;
- Kiln firing;
- Application of a final powder layer;
- Kiln roasting of the final powder layer at 356°F (180°C);
- Cooling.

CAST IRON

Protection of cast iron surfaces for bases

The protection of cast iron elements is achieved by the following treatments:

- Surface micro shotblasting;
- Mono-component dip galvanizing followed by: Wilting > Drying > Cooling;
- Epoxy micaceous primer application followed by: Wilting > Drying > Cooling;
- Acrylic enamel application followed by: Wilting > Drying > Cooling;
- Packing at least after 24-hour-drying at room temperature.

DIE-CAST ALUMINIUM

Protection of die-cast aluminium surfaces for lighting fixtures, tops, collars, brackets and pastorals

Lighting fixtures, brackets, pastoral, and die-cast accessories undergo a cycle of powder painting which creates a barrier against the corrosion of metal parts. Moreover this barrier makes the finished product comply with design specifications in terms of surface roughness, color and reflectance.

The cycle consists of the following steps:

- Micro sandblasting;
- Hot pickling bath in a zinc-based phosphodegreasing solution;
- Specific process for the preparation of surfaces before painting;
- Washing with water;
- Rinsing with demineralised water and subsequent drying;
- First powder layer application followed by kiln baking at 356°F (180°C);
- Final powder layer application using a High Durability product and final kiln roasting at 356°F (180°C).



Salt spray test

The top quality of such treatments is confirmed by salt spray tests performed in accordance with standard ISO 9227:2017 Neutral Salt Spray test (NSS).

The test was carried out for 8.000 hours at 95°F (35°C) and demonstrated through the report test released.



GMR ENLIGHTS s.r.l.

Legal headquarters:
Strada Provinciale Specchia - Alessano, 68 • 73040 (LE)

Administrative and operational headquarters:
Via Grande n°226 • 47032 Bertinoro (FC)

T +39 0543 462611
F +39 0543 449111

sales@gmrenlights.com
www.gmrenlights.com